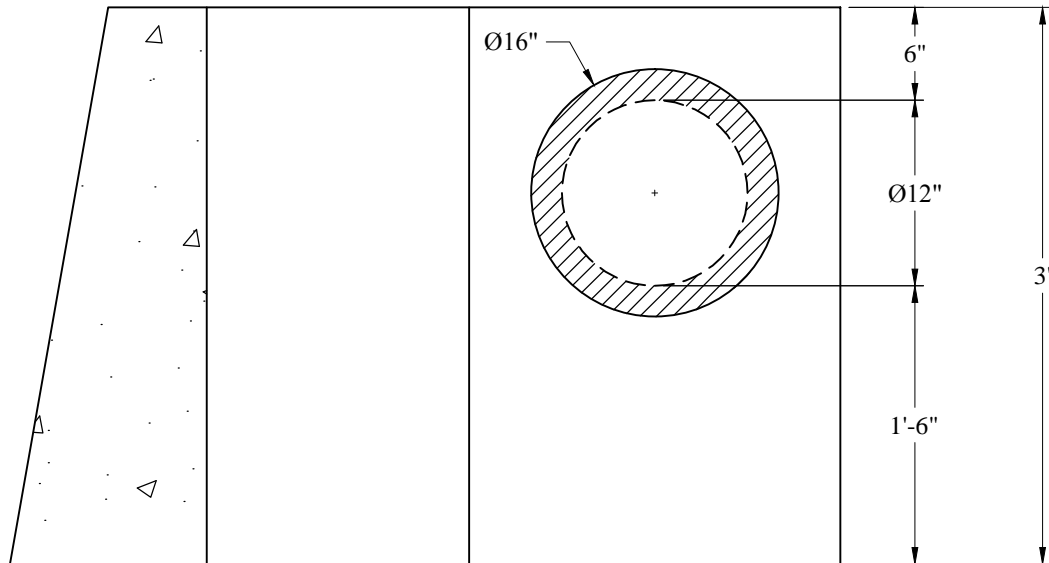
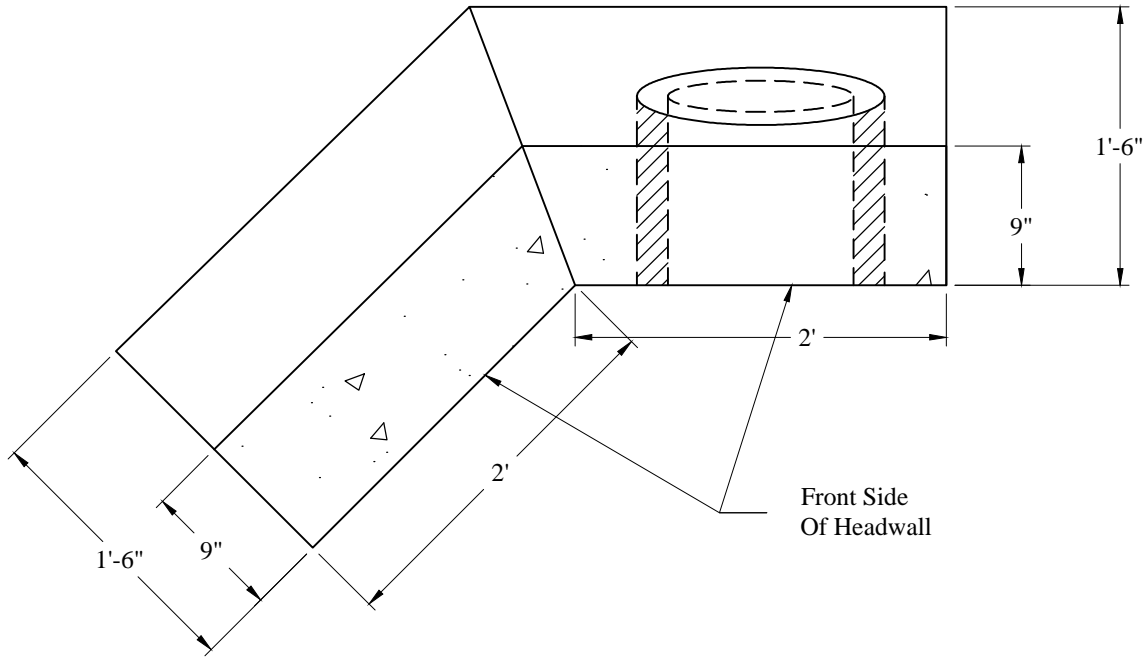


1-800-639-2199

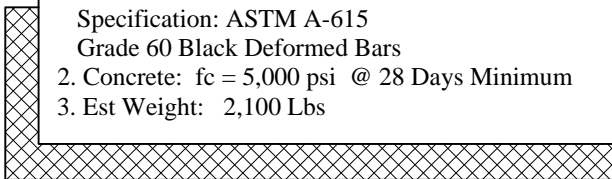
Fax (603) 224-2927

Phoenix Precast Products Headwalls\Standard\DOT\L-Shaped\12in L-Shaped UD 135 Degrees UL2 (v)



**General Notes**

1. Steel Reinforcement Conforms to Latest ASTM Specification: ASTM A-615 Grade 60 Black Deformed Bars
2. Concrete:  $f_c = 5,000$  psi @ 28 Days Minimum
3. Est Weight: 2,100 Lbs



Phoenix  
Precast  
Products

NHDOT UL-2  
12" Underdrain "L"  
135° Headwall

P/N: HWL-12DOTUL2

Phoenix Precast Products